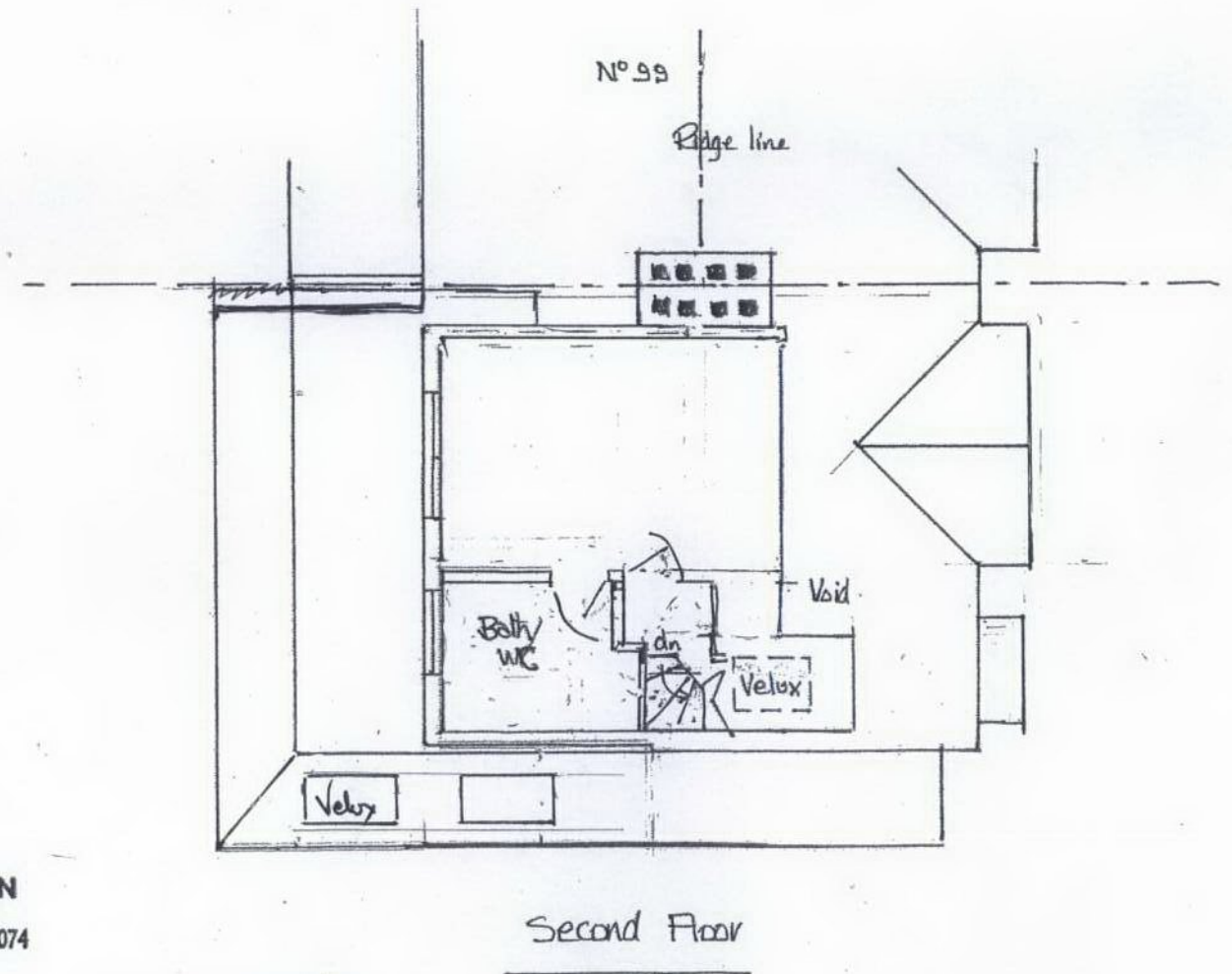
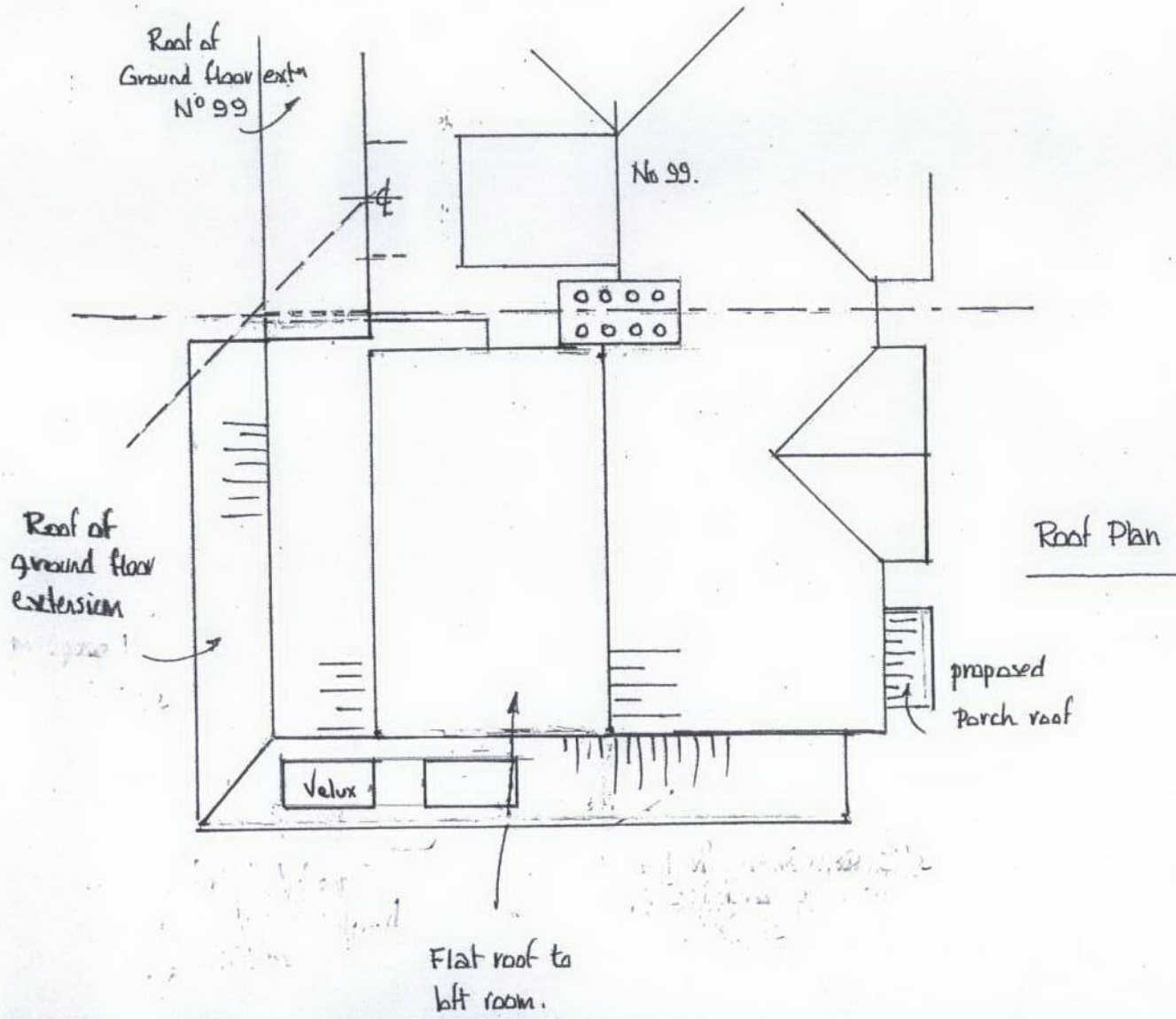
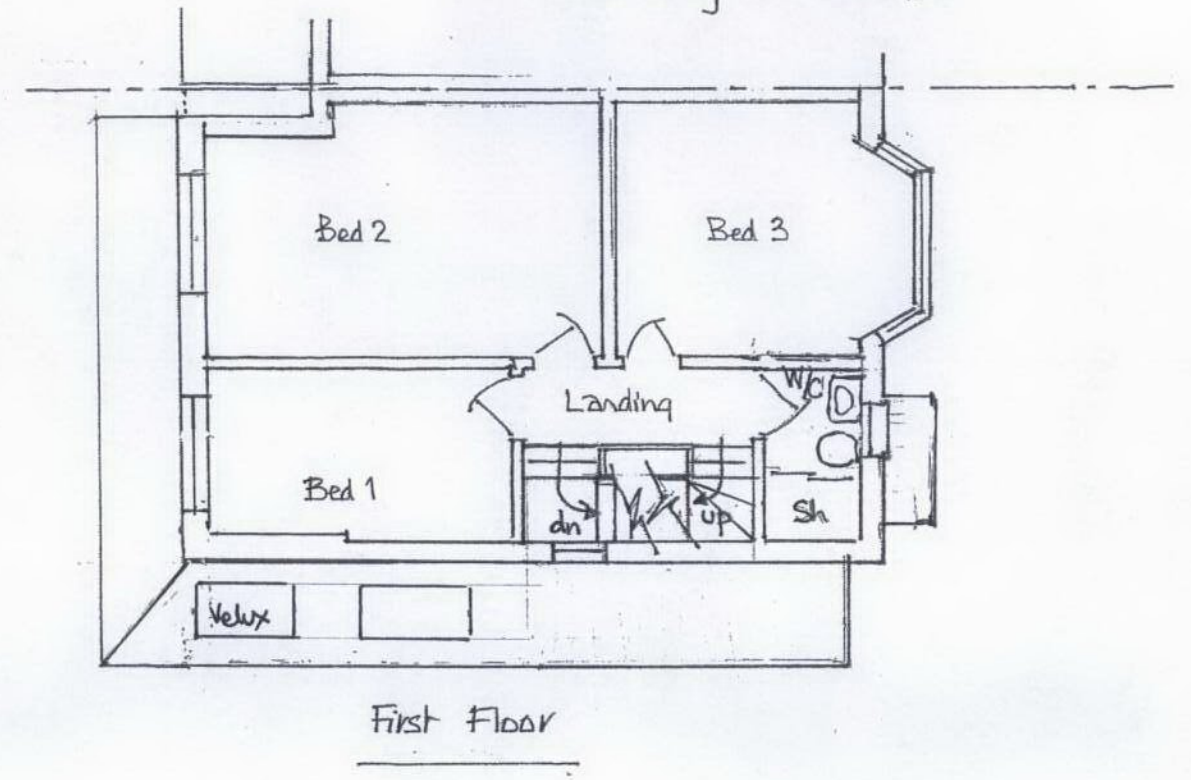
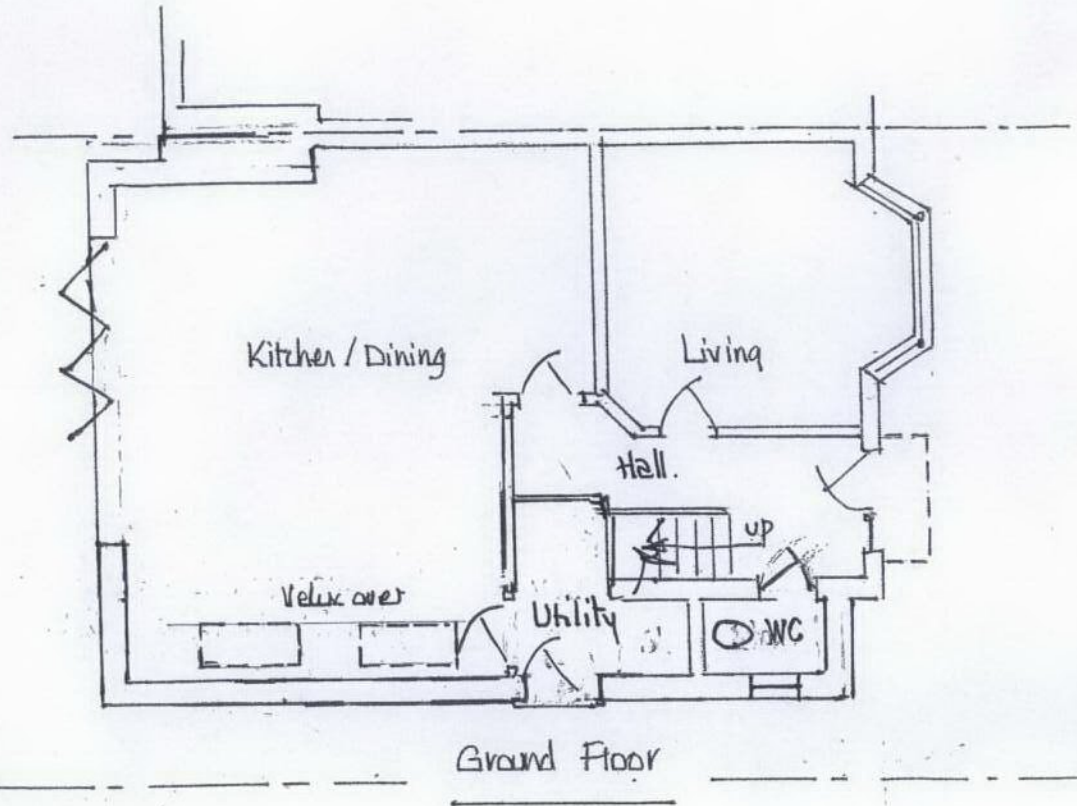


Proposed Extensions at No 97,
Perne Road, Cambridge
CB1 3SB

Scale 1:100 @ A3.

Floor Plans as Built
June 2014.



BRETHOUSE DESIGN
44 Beaumont Road
Cambridge CB1 8PY Tel: 01223 247074
S.J. Hall M.I.C.E.
Chartered Civil Engineer

© S.J. Hall May 2012

Rev. N. as built
17.6.14.